

C12 Overpressure Reverser

Serial: 2221XXX

Centralized greasing systems » Reverser



Applications

- It is used for switching lines into double line lubrication systems of grease or oil

Features

- Steel body
- Annealed external surface protection
- Different possibilities of control
- Adjustable set pressure



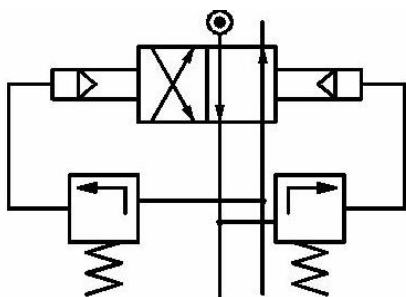
Description

Overpressure reversers are devices to automatically switch the work line into double line lubrication systems. Once the set pressure is reached, the overpressure reverser will switch from one line to another.

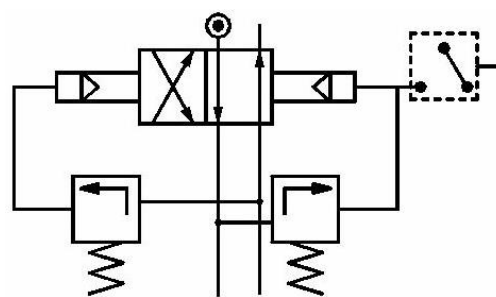
Design and operating principle

This overpressure reverser are mechanically actuated and specially designed for double line systems of medium length. Overpressure reverser works very similar to a two ways- two ports valve.

If the pressure in the work line reaches the set pressure, an internal overpressure valve will open and command a piston to actuate against the other two pistons, one of them will switch the work line.



Schematic drawing without control



Schematic drawing with control detector

Installation

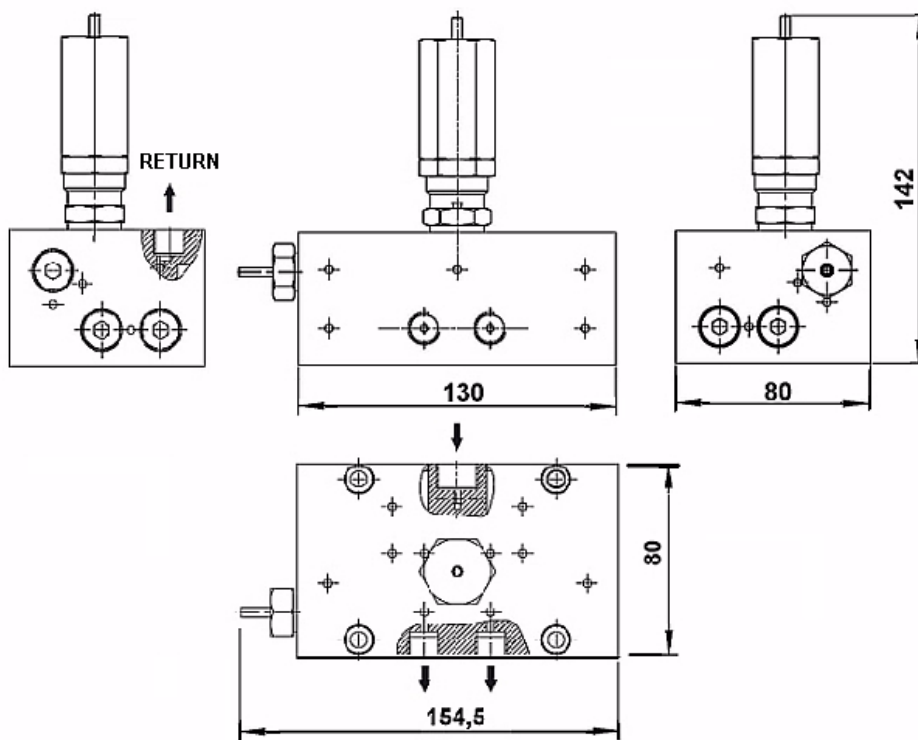
Unit in proper operation, It must be connected at the beginning of the installation, at the pump outlet.

Characteristics

Flow	12 kg/h
Maximum working pressure	300 bar
Minimum working pressure	40 bar
Inlet connection	G 3/8" female (bspp)
Outlet connection	G 1/4" female (bspp)
Return connection	G 1/4" female (bspp)
Mounting position	Variable
Body material	Steel EN10087 - 11SMnPb30 Zinc protection
Weight	4,4 kg
Dimensions	130x80x55 mm
Qualities	Zinc protection ISO 2081 - Fe/Zn12/A

Dimensional drawing

Dimensions in mm



Ordering information

Description	Reference
With visual control	2221143
With limit switch control	2221244
With inductive proximity sensor control M14x1	2221343

Accessories

Description	Reference
Visual control	2221114
Limit switch control	2221115
Inductive proximity sensor control M14x1	2221116