

C65 Overpressure Reverser

Serial **221555X**

Centralized greasing systems » Reversers

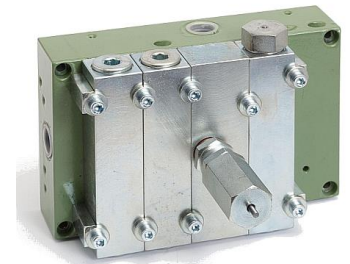


Applications

- It is used for switching lines into double line lubrication systems of grease or oil

Features

- Steel body
- Annealed external surface protection
- Different possibilities of control
- Adjustable set pressure



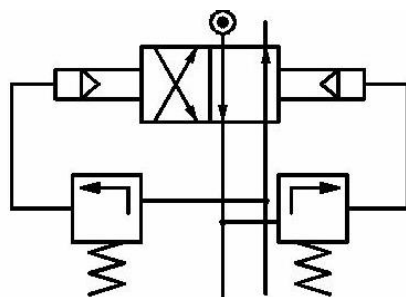
Description

Overpressure reversers are devices to automatically switch the work line into double line lubrication systems. Once the set pressure is reached, the overpressure reverser will switch from one line to another.

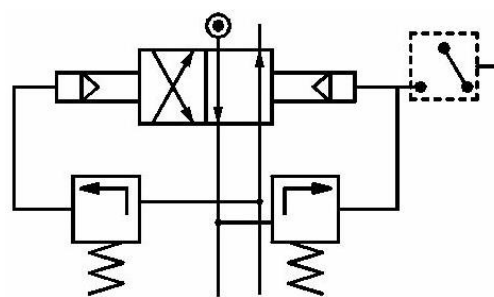
Design and operating principle

This overpressure reverser are mechanically actuated and specially designed for double line systems with great length and high work pressure. Overpressure reverser works very similar to a two ways- two ports valve.

If the pressure in the work line reaches the set pressure, an internal overpressure valve will open and command a piston to actuate against the other two pistons, one of them will switch the work line.



Schematic drawing without control



Schematic drawing with control detector

Installation

Unit in proper operation, It must be connected at the beginning of the installation, at the pump outlet.

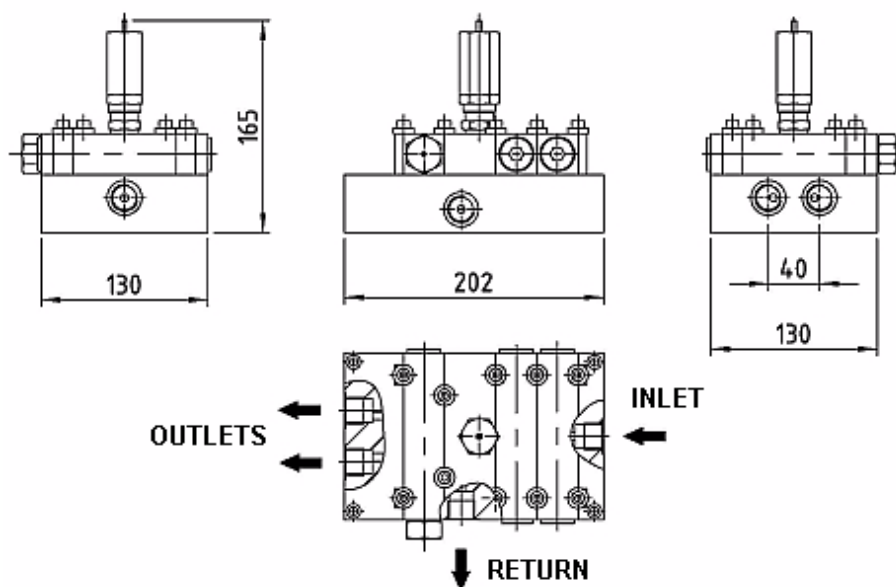
Characteristics

Flow	65 kg/h
Maximum working pressure	400 bar
Temperature	-20 °C / +80 °C
Outlet-inlet connections	G 1/2" female (bspp)
Return connection	G 1/2" female (bspp)
Body material	Steel EN10087 - 11SMnPb30 Zinc protection
Mounting position	Variable
Weight	12,5 kg
Grease	NLGI 3 ASTM Max.
Dimensions	202x130x164 mm
Qualities	Zinc protection ISO 2081 - Fe/Zn12/A

F001041.04/17

Dimensional drawing

Dimensions in mm



Ordering information

Description	Reference
With visual control	2215555
With limit switch control	2215556
With inductive proximity sensor control M14x1	2215557

Accessories

Description	Reference
Visual control	2221117
Limit switch control	2221118
Inductive proximity sensor control M14x1	2221119