

Automatic pump B12

Series 1029700

Centralized greasing system » Pumps for centralized lubrication » Electric pumps



Applications

- These types of pumps are perfect for lubrications that include a large or medium number of greasing points on conveyor belts for mining, or steel mill rolling mills.

Features

- Possibility of different tanks of 10, 20 y 40 kg
- Body made of cast aluminium according EN 1706 - AC-43100.
- Possibility of using oil or grease
- Different level options, visual level, electrical level of maximum, minimum and analog level.
- Different electric motors and reductions depending on the flow rate and the lubricant chosen
- Pressure control

Descripción

This type of pump constitutes a fundamental core in any centralized lubrication medium system. Its multiple variables offer a multitude of possibilities in terms of lubrication.

Design and operating principle

It is a piston pump with motorized drive, the engine gives movement to the chosen reduction, rolls more pinion, displacing a plunger which produces the injection of grease or oil.

Three models of deposit, 10, 20 and 40 kg with various types of levels depending on whether we grease with oil or grease and one model without tank but connection to external tank, are an added value to allow greasing a prolonged period of time without maintenance.

An internal filter, an overpressure valve and a pressure gauge complement the control of this pump.

Installation

The installation of this pump must be carried out in a place with sufficient space for maintenance.

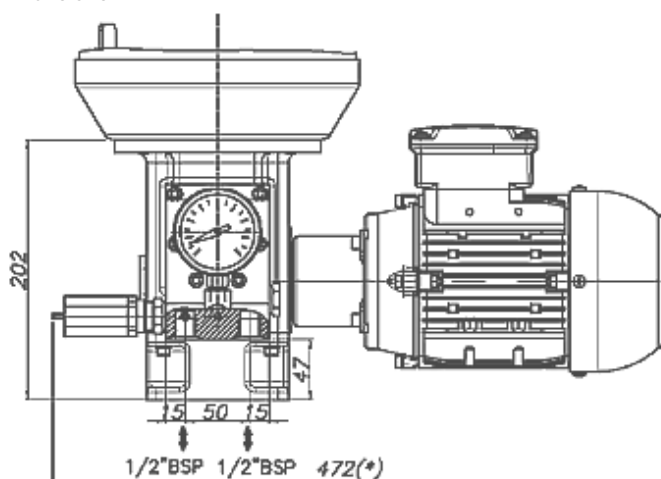
The pump is provided with four lower screws to anchor it on a mounting bench ref. 1029775 or on any bench or even loose.

Another type of assembly that we offer is on a bench type 192XXXXXX centralizing the pump and the regulation and control systems at the same point, including if a terminal box or panel is required to also unify the electrical system.

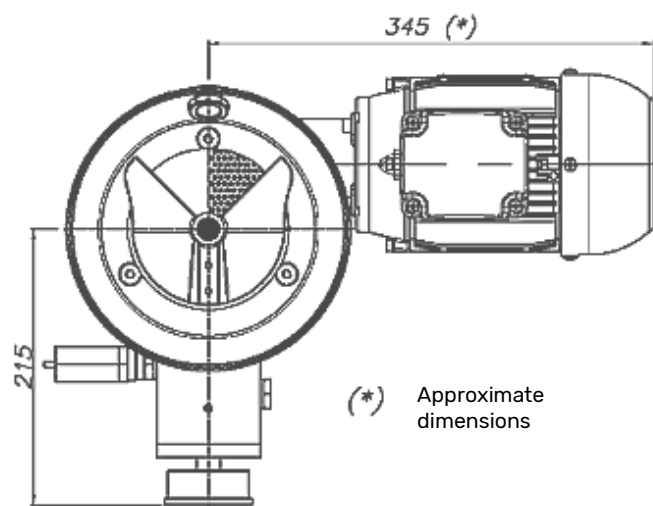
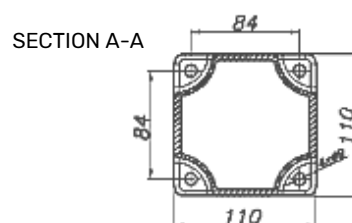
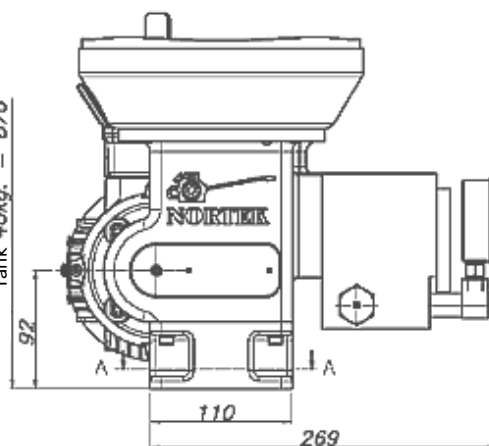


Dimensional drawing

Dimensions in mm

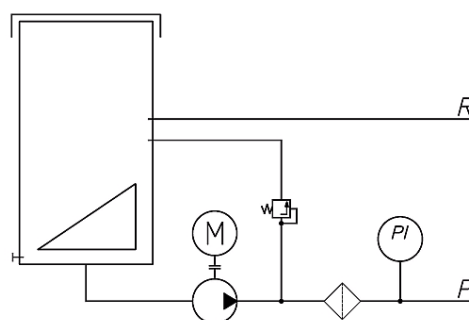


With cover = 270
 Tank 10kg. = 670
 Tank 20kg. = 800
 Tank 40kg. = 870



(*) Approximate dimensions

Synoptical diagram



Specifications

Recommended working pressure	250 bar
Maximum working pressure	400 bar
Connection	1/2" bsp
Approximate weight	14 kg (without tank and motor)
Recommended temperature	-20° C - +80° C

Flows

Motor (kW / Size)	Reduction	Flow (50 Hz)	Flow (60 Hz)
0,37 kW 71B	1: 7,5	10,3 kg/h	12,3 kg/h
0,18 kW 63B	1: 12	1,4 kg/h	1,7 kg/h
0,25 kW 71A	1: 30	2,6 kg/h	3,3 kg/h
0,37 kW 71B	1: 55	6,4 kg/h	7,7 kg/h

Ordering information

For the correct reference of the pump, the reduction, motor and its voltage must be selected from the table below.

The tank or any other configuration not described in the reference must be select from the accessories section.

Specifications	Reference
Pump model	1029700 X X X
Reductions	
1 : 12	A
1 : 30	B
1 : 55	C
1 : 7,5	D
Motors	
Motor 71 B B14 0,37 kW	A
Motor 71 A B14 0,25 kW	B
Motor 63 B B14 0,18 kW	C
Option without motor	0
Voltage	
380 V 50 Hz	A
400 V 50 Hz	B
415 V 50 Hz	C
440 V 50 Hz	D
460 V 50 Hz	E
480 V 50 Hz	F

Accessories

Specifications	Reference
Reduction 1 : 12 wheel + worm screw	4003812-01 + 4003812-02
Reduction 1 : 30 wheel + worm screw	4003830-01 + 4003830-02
Reduction 1 : 55 wheel + worm screw	4003855-01 + 4003855-02
Reduction 1 : 7,5 wheel + worm screw	4003875-01 + 4003875-02
Without coupling	1528205
Coupling motor 63 B14 (0.18 kW)	1528210
Coupling motor 71 B14 (0.25 kW / 0.37 kW)	1528220
Tank 10 kg	4111110
Tank 20 kg	4111120
Tank 40 kg	4111140
Minimum electrical level tank 40 kg	1628200-380
Minimum-Minimum electrical level tank 40 kg	1628200-420
Maximum electrical level tank 40 kg	1628220
Cover (Without tank)	4108100
Bench	1029775
Position switch	Telemecanique XCK-M115
Position switch	Telemecanique XCK-M102
Level transmitter 0-10 V	2051400
Level transmitter 4-20 mA	2051401